

# WEEKLY NEWSLETTER

## ST ANTHONY'S CATHOLIC PRIMARY SCHOOL

### WE ARE GOD'S WORK OF ART

ISSUE 22 | SPRING 2025 | SCHOOL NUMBER 01772 726621 |



#### STAR OF THE WEEK AWARDS FRIDAY, 28TH FEBRUARY, 2025

|              |                 |             |                    |              |                 |
|--------------|-----------------|-------------|--------------------|--------------|-----------------|
| <i>Rec S</i> | <i>Leo F</i>    |             |                    | <i>Rec T</i> | <i>Eliza P</i>  |
| <i>1/2S</i>  | <i>Helen D</i>  | <i>1/2T</i> | <i>Charlotte B</i> | <i>1/2A</i>  | <i>Cassia N</i> |
| <i>3S</i>    | <i>Olivia H</i> | <i>3/4T</i> | <i>Kayden G</i>    | <i>4A</i>    | <i>Simon M</i>  |
| <i>5S</i>    | <i>Lera T</i>   | <i>5/6T</i> | <i>Callum McC</i>  | <i>6A</i>    | <i>Oliver J</i> |

#### HEADTEACHER'S AWARD

|              |              |
|--------------|--------------|
| <i>Eva P</i> | <i>Rec T</i> |
|--------------|--------------|

#### CITIZEN AWARD

|                 |           |
|-----------------|-----------|
| <i>Hunter W</i> | <i>6A</i> |
|-----------------|-----------|

[office@st-anthonys.lancs.sch.uk](mailto:office@st-anthonys.lancs.sch.uk)

#### SCHOOL DAY

School starts at 8.45am with doors opening from 8.40am

All children must be in class for 8.45am prompt in readiness for morning registration

School finishes at 3.15pm

#### SCHOOL MEALS

Week commencing 3<sup>RD</sup> March will be week 2 of the Autumn/Winter Menu

Key stage 2 school meals are now charged at £2.70 per day for paying parents

This week all the children spent time in prayer with the statue of Our Lady of Lourdes, patron saint of our Diocese, as part of the Diocese Centenary Tour. On Wednesday, our prayer leaders went on pilgrimage taking the statue to Corpus Christi High School – they took part in a prayer service and then enjoyed refreshments with pupils from Year 10.

Next week, we have the start of Lent and all the children will be attending Mass on Wednesday to receive ashes. All families will also receive a 'Lent Calendar' with daily tasks for this Lent, as we journey forward as Pilgrims of Hope in this Jubilee Year.

Have a lovely weekend!

Mrs Barnes

## Dance Competition

On Wednesday, Miss Bennett and Mrs Eastham had the pleasure of taking ten girls to Fulwood Academy to represent school in a Dance Competition.

The air buzzed with excitement as the dance group took to the stage. The girls have worked tirelessly in Dance Club since October to perfect their routine and it showed. Every leap, turn and step was executed with precision and a palpable sense of joy and their confidence radiated outwards, filling the hall. After their performance, one of the judges remarked on the group's infectious energy, noting how every single dancer wore a beaming smile, a testament to their love of dance and their shared sense of accomplishment. Well done to Amarah, Amira, Ava, Eliza, Holly, Ivy, Lucy, Maisie, Maya-Rose and Phoebe, your performance was outstanding.

## Year 6 Secondary School Place Offers

On Monday, 3<sup>rd</sup> March, Lancashire County Council will email secondary school offers to parents of Year 6 children. Emails will be sent during working hours and the School Admissions Team request that parents allow a full day for the email to arrive before making contact.

## Children and Family Wellbeing Service Drop in Sessions

One Stop Shop will take place from 2.00pm-4.00pm at Ribbleson Family Hub, everyone is welcome – please see flyer below for dates and more information.

## ONE STOP SHOP

Monthly Drop In - Families can access free advice & support No appointments needed just turn up!

**Warm and Welcome space have a Free tea or coffee and a bite to eat**

The Barnardo's MyTime to Thrive Service offers short-term therapy for children and young people struggling with their mental health and wellbeing. We support ages 5-18 and up to the age of 25 for those with additional needs.

Pathway Navigator-ASDAutism Pathway Navigator

Learn about the School Age Autism pathway processes, ask for advice about referrals and other mechanisms of support. Receive signposting support from someone with lived experience of a child/ young person with autism.

School Nurse - Bed wetting Sleep Hygiene & More  
Compass Bloom YP Mental Health support  
Housing - Preston City Council - Gateway  
Citizen Advice  
Benefit Advice - DWP  
Emotional Health and Wellbeing  
Debt Advice/Support  
Employment advice - DWP  
Relationship advice  
Home safety - Lancs Fire & Rescue  
Free Funded Nursery Places  
Safeguarding Project  
Runshaw College Apprenticeships  
Lancashire Women  
Accessing Food Banks  
Household living support  
Domestic Abuse Support  
Community Education Sexual Health



## *Dates for your diary*



~~Y5/6 Greek History Day~~ – Wednesday, 8<sup>th</sup> January

~~Whole School Mass~~ – Friday, 10<sup>th</sup> January – 9.15am

~~Extra-curricular clubs begin~~ – Monday, 13<sup>th</sup> January

~~Y5S Class Assembly~~ – Tuesday, 14<sup>th</sup> January – 9.05am

~~Y5/6 Crucial Crew visit at UCLAN~~

~~Y3S Class Mass~~ – Wednesday, 15<sup>th</sup> January – 9.15am

~~Y3/4T Class Assembly~~ – Tuesday, 21<sup>st</sup> January – 9.05am

~~Y5/6T Class Mass~~ – Wednesday, 22<sup>nd</sup> January – 9.15am

~~Y1/2S Class Mass~~ – Wednesday, 29<sup>th</sup> January – 9.15am

~~Y1/2T Class Assembly~~ – Thursday, 30<sup>th</sup> January – 9.05am

~~RecS & RecT Class Assembly~~ – Tuesday, 4<sup>th</sup> February – 9.05am

~~Y6A Class Mass~~ – Wednesday, 5<sup>th</sup> February – 9.15am

~~NSPCC Number Day (Dressing-up)~~ – Friday, 7<sup>th</sup> February

~~St. Anthony's (has) Got Talent~~ – Friday, 7<sup>th</sup> February – 6.00pm

~~Y4A Class Assembly~~ – Thursday 13<sup>th</sup> February – 9.05am

~~Y1/2A Class Mass~~ – Wednesday, 12<sup>th</sup> February – 9.15am

~~Half Term~~ – Monday, 17<sup>th</sup> February – Friday, 21<sup>st</sup> February

~~Inset Day~~ – Monday, 24<sup>th</sup> February

~~Y5S Class Mass~~ – Wednesday, 26<sup>th</sup> February – 9.15am

~~Y5/6T Class Assembly~~ – Tuesday, 4<sup>th</sup> March – 9.05am

~~Whole School Mass (Ash Wednesday)~~ – 5<sup>th</sup> March – 9.15am

~~World Book Day (Dressing-up)~~ – Thursday, 6<sup>th</sup> March

~~Y1/2S Class Assembly~~ – Tuesday, 11<sup>th</sup> March – 9.05am

~~Y3/4 Class Mass~~ – Wednesday, 12<sup>th</sup> March – 9.15am

~~Y6A Class Assembly~~ – Tuesday, 18<sup>th</sup> March – 9.05am

~~Y1/2T Class Mass~~ – Wednesday, 19<sup>th</sup> March – 9.15am

~~Parents Consultation Meetings~~ – Wednesday 19<sup>th</sup> March

~~Tempest Photography – Class/Group Photos~~ – Thursday, 20<sup>th</sup> March

~~Y3S Class Assembly~~ – Tuesday, 25<sup>th</sup> March – 9.05am

~~Y4A Class Mass~~ – Wednesday, 26<sup>th</sup> March – 9.15am

~~Y1/2A Class Assembly~~ – Tuesday, 1<sup>st</sup> April – 9.05am

~~RecS & RecT Class Mass~~ – Wednesday, 2<sup>nd</sup> April – 9.15am

~~Easter Reflection (whole School)~~ – Thursday, 10<sup>th</sup> April

~~Close for Easter~~ – Friday, 11<sup>th</sup> April at 1.30pm

## Advance Notice – Parents' Meetings

Parents' Meetings will take place in the school hall on Wednesday, 19<sup>th</sup> March. There will be two sessions – 1.30pm-3.00pm and 3.30pm-7.00pm. Ten minute time slots will be available to book through Groupcall Messenger in due course.

## Advance Notice 2025 Statutory Assessments

Year 6 statutory assessments will take place from Monday, 12<sup>th</sup> May to Thursday, 15<sup>th</sup> May inclusive and children in Year 1 will undertake their phonics screening week commencing 9<sup>th</sup> June.

## Author Visit



The talented Joanne Moore will be joining us in school on Wednesday, 5<sup>th</sup> March for a whole school read and an ambitious writer's workshop shortly after.

Joanne's stories are about differences and self-belief and they aim to promote inclusion. If you would like to know a little bit more about 'The Bit Different Collection' you can visit:-

facebook.com/thebitdifferentcollection  
instagram.com/the.bit.different.collection  
website: www.thebitdifferentcollection.com

Joanne will be bringing any books ordered online with her on the day.

## FOSTA Spring Discos

FOSTA's Spring Discos will take place on Wednesday, 5<sup>th</sup> March at the following times:-

**\*\*\*Please be aware of the set up change\*\*\***

**Years 3,4,5 and 6 disco – 3.30pm – 4.45pm**

Children will go straight from class to the disco.

**Children will need to come to school in their school uniform and bring their disco clothes with them.**

Pick up will be from the KS2 playground. Children will not be allowed to walk home unless we have received prior disco specific permission from their parents.

Tickets are £3.50 and drinks and sweets will be available to buy at the disco.

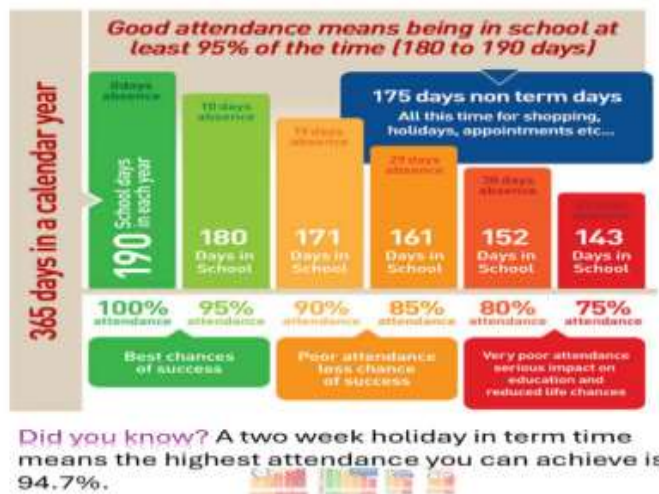
**Reception and Years 1 and 2 disco – 5.00pm – 6.00pm**

Drop off for Reception and Years 1 and 2 children will be through the hall door by the car park and pick up will be from the KS2 playground.

Tickets are £4.50, which includes a drink and sweets.

**Please pay through your parent pay accounts.**

## Attendance – Friday, 14<sup>th</sup> February to Thursday, 27<sup>th</sup> February, 2025



| Class               | % Attendance |
|---------------------|--------------|
| Rec S               | 94.6%        |
| Rec T               | 89.8%        |
| 1/2S                | 95.4%        |
| 1/2T                | 93.5%        |
| 1/2A                | 94.2%        |
| 3S                  | 95.7%        |
| 3/4T                | 96.7%        |
| 4A                  | 89.9%        |
| 5S                  | 97.6%        |
| 5/6T                | 98.0%        |
| 6A                  | 94.4%        |
| Whole School        | 94.6%        |
| Whole School Target | 96.0%        |

**Attendance Winners** - A huge well done to class 5/6T who have achieved 98.0% attendance this week.

**Punctuality** – Registration is at 8.45am prompt and when a child arrives in class after 8.45am they receive a late mark. Arriving on time is important, being late means that children miss the start of lessons, which means lost learning.



**No Lates** – Well done to class 6A who have had no lates this week.

## Attendance Reminder

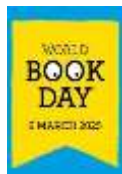
Please can we remind you, if your child is going to be absent from school due to illness, it is essential that you contact the school office before the start of each school day. Your child's absence will be recorded as unauthorised unless we hear from you.

Any holidays taken during term time will always be unauthorised unless there are exceptional circumstances. Penalty notices may be issued for absences of five days and over.



### Themed Own Clothes Day

### World Book Day – Thursday, 6<sup>th</sup> March



Children are invited to wear a costume linked to their favourite book and are encouraged to bring the book to school to share with their class



## COMPETITION TIME

To celebrate World Book Day, we are asking you to take a photo of yourself reading a book in an unusual place.

HERE'S DEEPDALE DUCK WITH SOME INSPIRATION!



Please submit your photo entry to: [James.ford@pne.com](mailto:James.ford@pne.com)

The deadline for submissions is 5pm on Monday, 3rd March with the winner being announced on the morning of Tuesday 4th March.

The winner's school will receive free books!

[@pnecommunity](#) [f](#) [PNECET](#) [www.pnec.net/pnecet](http://www.pnec.net/pnecet)

### Class and Group Photographs



Tempest Photography will be in school on Thursday, 20<sup>th</sup> March to take class and group photographs.

Please contact the school office no later than Monday, 17<sup>th</sup> March if you **do not** wish your child to have their photograph taken.

TERM DATES

SEPTEMBER 2025 - JULY 2026

## St Anthony's Catholic Primary School

### AUTUMN TERM 2025

|                       |   |
|-----------------------|---|
| INSET DAYS            | Monday 1st September 2025                       |
| RE-OPEN               | Tuesday 2nd September 2025                      |
| MID-TERM CLOSURE      | Monday 27th October to Friday 31st October 2025 |
| INSET DAY             | Monday 3rd November 2025                        |
| CLOSURE FOR CHRISTMAS | Friday 19th December 2025 at 1.30pm             |



### SPRING TERM 2026

|                    |   |
|--------------------|---|
| RE-OPEN            | Monday 5th January 2026                           |
| MID-TERM CLOSURE   | Monday 16th February to Friday 20th February 2026 |
| CLOSURE FOR EASTER | Thursday 2nd April 2026 at 1.30pm                 |



### SUMMER TERM 2026

|                    |  |
|--------------------|--|
| RE-OPEN            | Monday 20th April 2026                       |
| BANK HOLIDAY       | Monday 4th May 2026                          |
| MID-TERM CLOSURE   | Monday 25th May 2026 to Friday 29th May 2026 |
| INSET DAY          | Monday 1st June 2026                         |
| CLOSURE FOR SUMMER | Friday 17th July 2026 at 1.30pm              |



### Free International Women's Day Event

Fulwood Library are holding an International Women's Day event at 10.30am on Saturday, 8<sup>th</sup> March. Local historian, Peter Marsden, will be speaking at the event, which is suitable for families and individuals.

Booking in advance is required through the link below:-  
[From the factory to the field: a brief illustrated talk on Dick, Kerr Ladies football team.](#)

